






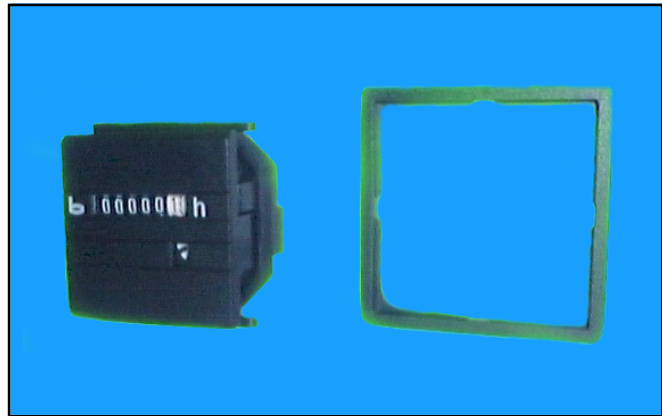


48mm Hours Run Meters

HK6

TECHNICAL FEATURES

-  **RECORD / MONITOR / TOTALISE, OPERATING TIME OF MOST ELECTRICAL DRIVEN EQUIPMENT**
-  **NON RESETTABLE DISPLAY**
-  **WIDE RANGE OF SUPPLY VOLTAGES**
-  **55mm & 72mm BEZELS AVAILABLE**
-  **MAXIMUM READOUT 99,999,99 HOURS**



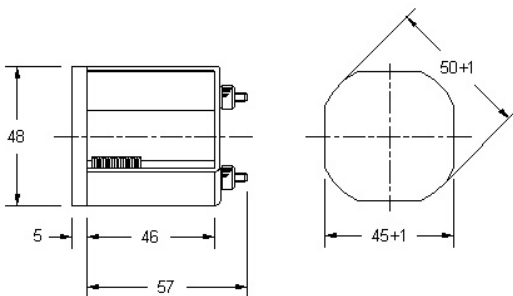
TECHNICAL SPECIFICATION

SUPPLY VOLTAGE(S)	24V, 48V, 120V, 230V AC, 50Hz
POWER CONSUMPTION	Approximately 2 watts or 3VA
COUNTING CAPACITY	99,999,99 Hours. Non Resettable
READING ACCURACY	1/ 100 of an hour or 36 seconds
OPERATING TEMPERATURE	- 10 °C + 55 °C
INTERFERENCE PROTECTION	The unit does not cause radio frequency interference

ORDERING DETAILS

HK6	VOLTAGE
HK6 55 BEZ EL	
HK6 72 BEZ EL	

CASE DIMENSIONS



Dimensions in mm.

MOUNTING CUT OUTS

