



DC Indirect Separate Scale Ammeters & Shunts

XBQ

TECHNICAL FEATURES

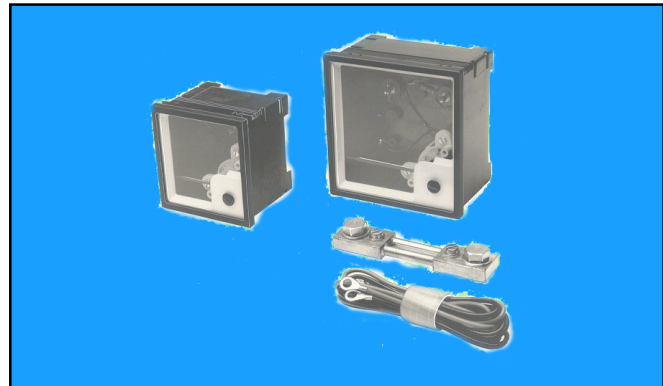
72mm AND 96mm DIN INDIRECT DC MOVING COIL AMMETERS WITH A BASIC MOVEMENT OF 60mV TO A CLASS ACCURACY OF 1.5 INTERCHANGEABLE SCALES OF UP TO 600 AMPS CAN BE FITTED IN CONJUNCTION WITH 60m V SHUNTS.

AMMETERS SUPPLIED WITHOUT SCALE

SCALE RANGES 10 TO 600 AMPS AVAILABLE

SHUNT RANGES 10 TO 600 AMPS AVAILABLE

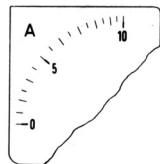
TO BS89, 1EC51, VDE0410, DIN 3700



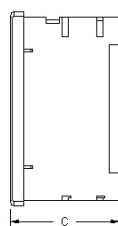
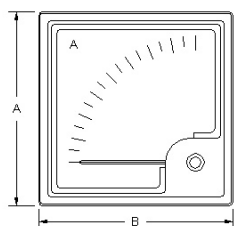
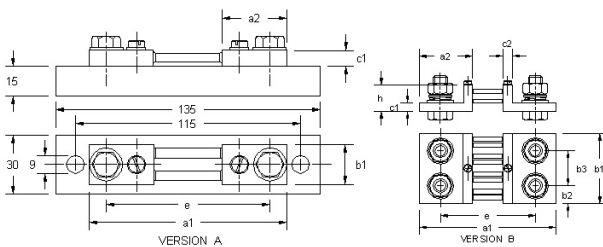
DC INDIRECT SCALES

All scale values are available in 72mm (72A) or 96mm (96A) sizes, which are compatible with the basic XBQ 72A (72mm) and XBQ 96A (96mm) meter movements, which are supplied WITHOUT scales.

SCALE VALUES	SCALE VALUES
0 - 10 Amps	0 - 400 Amps
0 - 15 Amps	0 - 600 Amps
0 - 25 Amps	
0 - 40 Amps	
0 - 60 Amps	
0 - 100 Amps	
0 - 150 Amps	
0 - 250 Amps	



DIMENSIONS & MOUNTING



Dimensions			
Model	A	B	C
OFQ 72	72mm	72mm	53mm
OFQ 96	96mm	96mm	53mm

Panel cut-out for 72mm is 68 x 68mm.
Panel cut-out for 96mm is 92 x 92mm.

Dimensions in mm.

ORDERING DETAILS

XBQ72A

XBQ96A

SCALE 72X	CURRENT
SCALE 96X	

SHUNT	CURRENT
-------	---------

DC INDIRECT SHUNTS 60 mV

SHUNT VALUES	VERSION	SHUNT VALUES	VERSION
10 Amps	A	250 Amps	B
15 Amps	A	400 Amps	B
25 Amps	A	600 Amps	B
40 Amps	A		
60 Amps	A		
100 Amps	A		
150 Amps	A		

DIMENSIONS (mm)	NOMINAL CURRENT (A)				
	10, 15, 25	40, 60, 100, 150	250	400	600
	VERSION A		VERSION B		
a1	90	100	145		
a2	28	33	55		
b1	20		30	40	
b2	-		15	20	
b3	-				
c1	8			10	
c2	-			10	
e	78	80		105	
h	-			30	
No of connections	2 x 1				
Screw DIN 933-5	M5 x12	M8 x 15	M12 x 40	M16 x 45	
Washer DIN 125	5.3	8.4	13.5	17	
Spring Washer DIN 127	-		12	16	
Nut DIN 934 - 5	-		M12	M16	
Voltage Connection	2 Cylindrical screws M5 x 8 DIN 84-4 and two washers 5.3 DIN 443				