



## DIN Rail Mounting Phase Failure/ Reversal Monitor

PRM

### TECHNICAL FEATURES

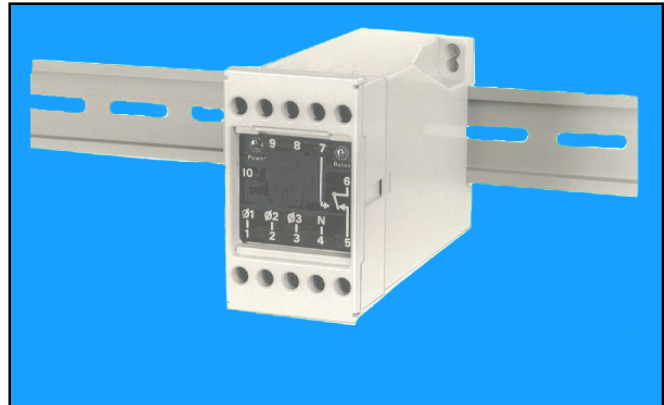
AN ECONOMIC PRODUCT DESIGNED TO PROTECT MOTORS, MACHINE TOOLS ETC, AGAINST INCORRECT PHASE ROTATION, OR TRIPPING DUE TO THE FAILURE OF ONE OR MORE PHASES (SPECIFY OUR UPM IF UNDER VOLTAGE PROTECTION IS ALSO REQUIRED)

PROVIDES PHASE FAILURE MONITORING

INCORRECT PHASE ROTATION PROTECTION

LED 'POWER' AND 'RELAY' STATUS INDICATORS

UNAFFECTED BY LOAD CURRENT



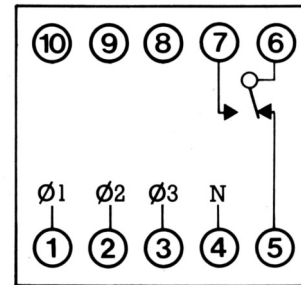
### ORDERING DETAILS

PRM

### TECHNICAL SPECIFICATION

<b>SUPPLY VOLTAGE(S)</b>	380/440V AC 50/60Hz, 3 phase, 3 or 4 wire
<b>POWER CONSUMPTION</b>	Approximately 2 watts or 3VA
<b>CONTROL OUTPUT</b>	One SPCO relay with contacts rated 1 amp at 440V AC and 5 amp 230V AC resistive
<b>OPERATING TEMPERATURE</b>	-10 °C + 60 °C
<b>INTERFERENCE PROTECTION</b>	Protected from short term supply borne transients

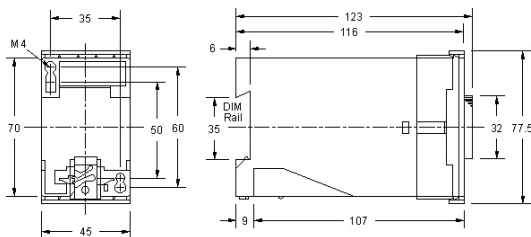
### CONNECTION DETAILS



### OPERATIONAL FEATURES

On application of a continuous satisfactory supply voltage the 'Power' and 'Relay' LED's illuminate and the relay energises. In the event of failure of one or more of the phases, or of incorrect phase rotation occurring, the relay will de-energise and the 'Relay' LED will extinguish. The unit will automatically reset on removal of the fault condition.

### CASE DIMENSIONS



Dimensions in mm