

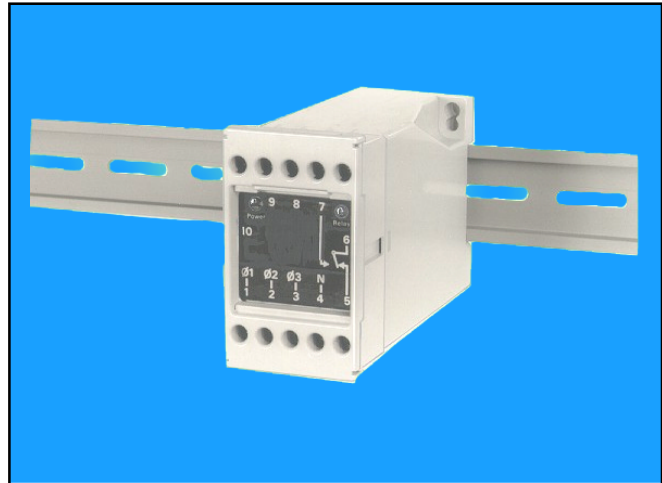


DIN Rail Mounting Undervoltage / Phase Monitor

UPM

TECHNICAL FEATURES

- ✎ **DESIGNED TO PROVIDE AN OUTPUT WHEN PHASE FAILURE OCCURS, PROTECTION AGAINST REVERSAL OR A REDUCTION IN LINE VOLTAGE BELOW 85% OF NOMINAL. HOUSED IN DIN RAIL OR SURFACE MOUNTING GREY ABS CASES WITH LED STATUS INDICATORS**
- ✎ **STANDARD OR CUSTOMER SPECIFIED CUT IN/ DROP OUT VOLTAGES**
- ✎ **FULL PHASE FAILURE MONITOR**
- ✎ **PROTECTION AGAINST INCORRECT PHASE ROTATION**
- ✎ **AUTOMATIC RESET**



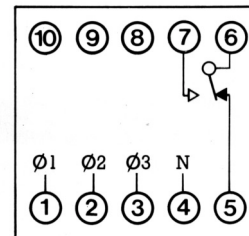
ORDERING DETAILS

UPM	3 WIRE	OPTIONS
	4 WIRE	

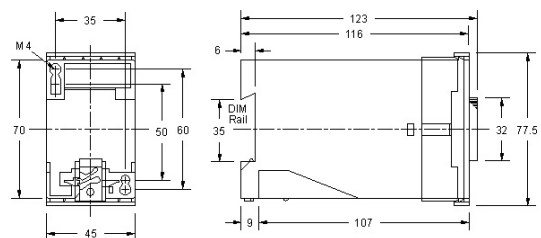
TECHNICAL SPECIFICATION

SUPPLY VOLTAGE(S)	380/440V AC 50/60Hz, 3 phase, 3 or 4 wire
POWER CONSUMPTION	Approximately 2 watts or 3VA
CONTROL OUTPUT	One SPCO relay with contacts rated 1 amp at 440V AC and 5 amp 230V AC resistive
STANDARD CUT-IN VOLTAGE	90% of nominal supply (See options below)
STANDARD DROP OUT VOLTAGE	85% of nominal supply (See options below)
ACCURACY	Maximum difference of voltage settings between phases will not exceed $\pm 2\%$
OPERATING TEMPERATURE	-10 °C to + 60 °C
INTERFERENCE PROTECTION	Protected from short term supply borne voltage transients
OPTIONS	Cut in voltage may be specified within 69% to 100% of nominal voltage. Drop out voltage may be specified from 2 to 50V LESS than the cut in voltage

CONNECTION DETAILS



CASE DIMENSIONS



Dimensions in mm

OPERATIONAL FEATURES

On application of a continuous satisfactory supply voltage the 'Power' and 'Relay' LED's illuminate and the relay energises. In the event of any of the following occurring the relay will de-energise and the 'Relay' LED extinguish:

- The supply voltage falling below the preset 'Drop Out' voltage
- Failure of one or more phases
- Incorrect phase rotation

The unit will automatically reset on removal of the fault condition, or in the case of undervoltage when the supply voltage again exceeds the 'Cut In' voltage.